

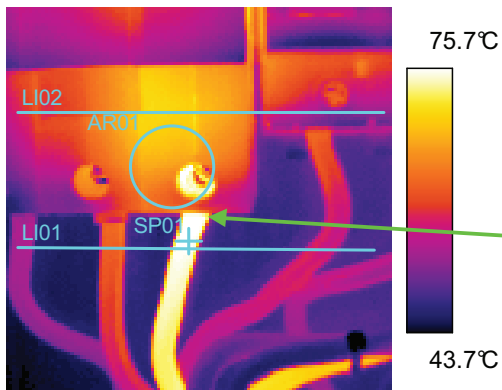


**Preventive Maintenance Inspection  
at  
DEMO REPORT**

*Date:2009/01/23*

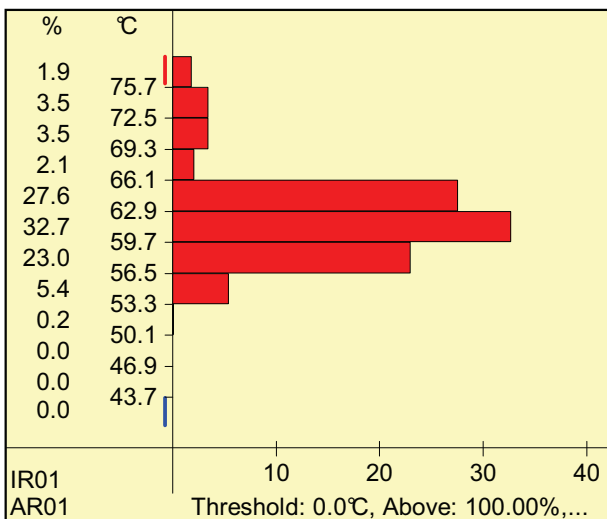
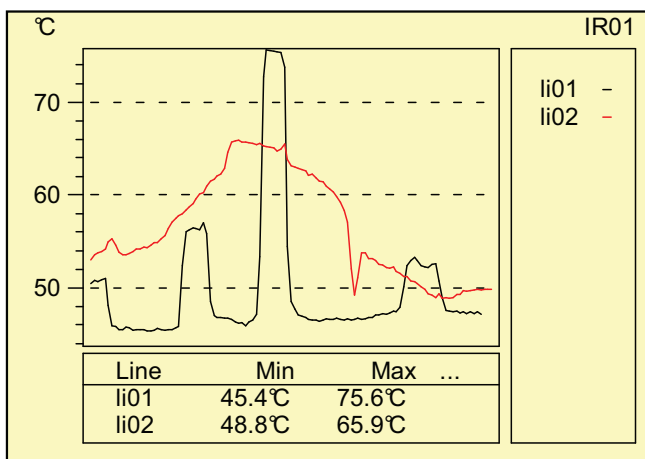
***INFRATECH ELECTRICAL SERVICES  
P.O.BOX 26234 EAST RAND 1541  
TELL:0117431262  
FAX: 0865062691  
CELL:J.CLOETE 0847557596  
CELL:M.CLOETE 0827895194  
CK NO:2009/002787/23***

Equipment	Section	Operator	Date
POT S/N 151.1 80 AMP HEINEMAN BREAKER	MAIN KITCHEN		2009/01/23



Object parameter	Value
Emissivity	0.96
Object distance	0.5 m
Ambient temperature	25.0°C

Label	Value	Diff temperature
SP01	75.8°C	*
LI01 : max	75.6°C	*
LI01 : min	45.4°C	*
LI02 : max	65.9°C	*
LI02 : min	48.8°C	*
AR01 : max	77.3°C	*
AR01 : min	52.1°C	*
AR01 : avg	62.2°C	*



**Recommendation**

P2 URGENT REPAIR

<u>FAULT REPAIRED</u>
<u>YES/NO</u>
<u>DATE REPAIRED</u>



# Summary of inspection at DEMO

GENERAL COMMENTS.

GENERAL REPAIRS AS FOLLOWS LOOSE CONNECTIONS, O/LOADED CABLES, WORN CONTACTS ON CONTACTORS, HEAT TRANSFER FROM FAULTY ELECTRICAL EQUIPMENT.  
 GENERATOR PANEL CHANGE OVER SWITCHES INSPECTION ALL IN ORDER.  
 HT SWITCHGEAR OUTGOING CABLE CONNECTIONS IN ORDER.  
 MAIN SUB STATION PANEL IN ORDER. COPPERS NEED TO BE RE INSULATED.  
 GENERAL EQUIPMENT IN GOOD CONDITION.

Equipment			Recommendation
20 AMP PLUG CIRCUIT	-	-	P3 REPAIR DURING MAINTENANCE
POT S/N 439.2 R/ELEMENT CONTACTOR 55 AMP	-	-	P2 URGENT REPAIR
POT S/N 151.1 LEFT CONTACTOR	-	-	P2 URGENT REPAIR
POT S/N 151.1 AUX CONTACTOR LEFT	-	-	P2 URGENT REPAIR
POT S/N 151.1 80 AMP HEINEMAN BREAKER	-	-	P2 URGENT REPAIR
POT SER NO 151.1 45 AMP BREAKER AUX RIGHT	-	-	P2 URGENT REPAIR
POT SERIAL NO 151.1 MIXING CONTACTOR RED PHASE	-	-	P2 URGENT REPAIR
POT S/N 151.1 TERMINAL STUD L3	-	-	P2 URGENT REPAIR
POT S/N 47.4 250 LT RIGHT CONTACTOR	-	-	P1 CRITICAL REPAIR
POT S/N 47.4 50 AMP BREAKER POT RIGHT	-	-	P1 CRITICAL REPAIR
ALOE POT 1 70 AMP FUCHS BREAKER	-	-	P2 URGENT REPAIR
450LT CAPDAN 150 AMP FUCHS BREAKER	-	-	P3 REPAIR DURING MAINTENANCE
OVEN 3 150 AMP FUCHS BREAKER.	-	-	P3 REPAIR DURING MAINTENANCE
SUB STATION D/B 100 AMP SUPPLY BREAKER	-	-	P3 REPAIR DURING MAINTENANCE

<u>CATEGORY</u>	<u>REPAIR P1</u>
Category P1 < 80 C	Critical Repair
Category P2 40 < 80 C	Urgent Repair
Category P3 10 < 40 C	Repair during maintenance.
Category P4 < 10 C	Check connection during maintenance periods.